



# DESIGN BROCHURE



# WHO WE ARE:

HK Interiors Ltd are a national design and shopfitting company serving all retail, commercial and public sectors throughout the UK. We specialise in a full turnkey package including shopfitting, refurbishments, new unit fit-outs, business redesign and expansion.

Customer satisfaction is at the heart of our business from initial concept to the site fitting of all trades. Our expert team of designers and installers ensure that every project is developed specifically to achieve each individual business' requirements. We apply our knowledge and expertise to support clients in producing original and unique concepts no matter how big or small the project. We pride ourselves on our exceptional service and dedication to client satisfaction.

We understand every aspect of a commercial fit-out and our vital principles include:

- Minimising business downtime during the works
- Achieving maximum commercial and retail prospects to the space
- Giving clients a unique visual experience
- Ensuring the design is optimised for everyday working practices of your business as well as being cost effective.
- Ensuring all work is completed in a healthy and safe environment protecting our team, our client's team and members of the public
- Applying our ethical approach to ensure the welfare of our teams and contractors is at the heart of what we do throughout our projects.



# WHAT WE DO:

Our team specialise in offering all shop fitting requirements for the food retail industry. Catering for both independent retailers and large chain stores we have the competency, experience and vision to not only undertake the work but to provide valuable input as to how to maximise space, create unique environments and where cost savings could be achieved without compromising the quality of the finish.

Our Services Include:

- Full 2D & 3D designs
- Design concept mood boards and finishes
- On-site fitting of all trades
- Refurbishments
- Business expansion/extension
- Shop re-designs
- New unit fit-outs
- Refrigeration units & counters
- Dry aging cabinets
- Bespoke servery counters
- Bespoke joinery
- Shop fronts
- Planning & Building Control Application Submission

We offer the entire package from design and consultancy to the on-site fitting of all elements and trades by our expert team. We not only consider giving your customers a great visual experience but we know the practical requirements for effective preparation, storage and display of products and produce as well.

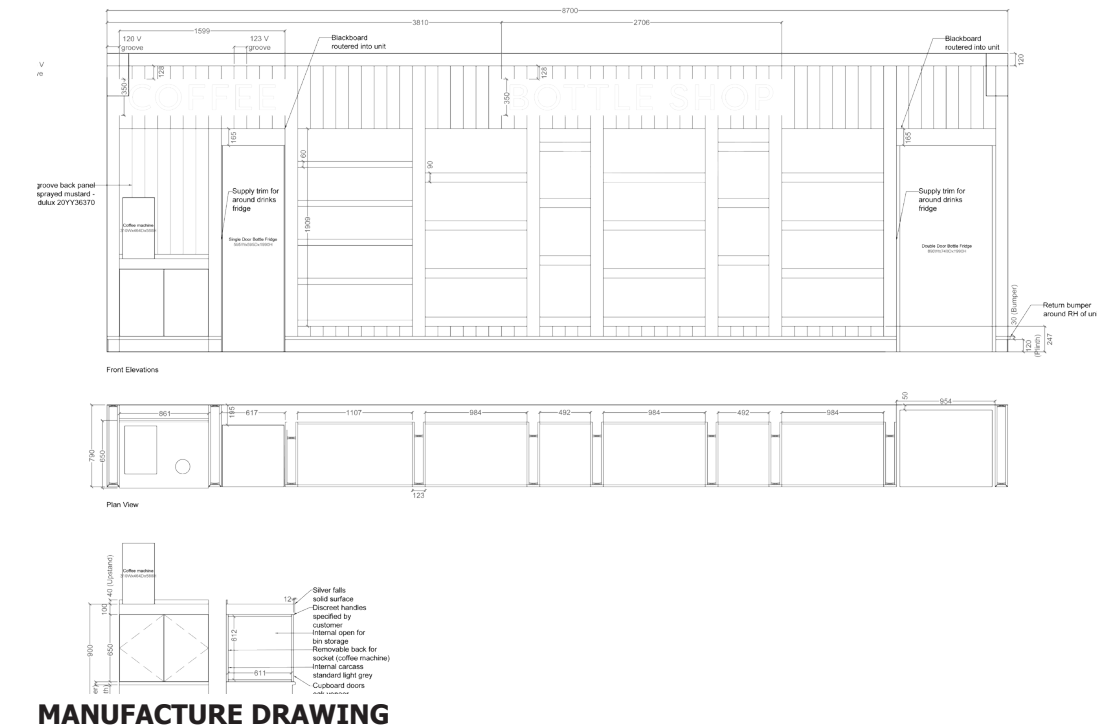




**All joinery items are designed, technically drawn and manufactured on site which allows an added level of flexibility and customisation that is undoubtedly unique to HK. We have invested in numerous pieces of equipment such as:**

- **CNC router**
- **Dimension saw**
- **Wide belt sander**
- **Edge bander**
- **Timber surface structuring machine**
- **Spray booth**
- **Welding facilities**

**Amongst many others that provide us with a fully functioning factory to manufacture made to measure furniture and displays for our clients. Bespoke joinery items are made on our site which gives us the ability to inspect prior to release and also deal with any last-minute changes giving you as much flexibility as possible during the project with minimal risk of wasted time and costs.**





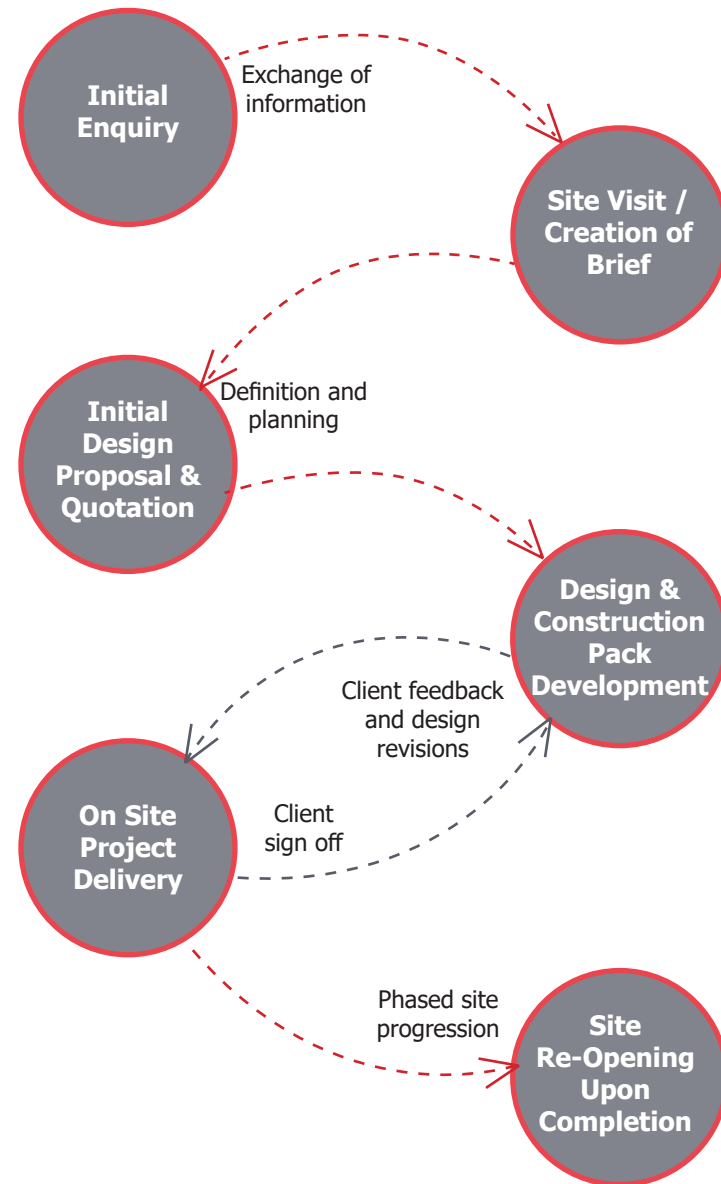
"I cannot praise them enough for the job they have done from planning to carrying out the work they have been very professional and transformed my shop in just 13 days. Quite how they managed to turn it around in that short period of time is beyond me, but the standard of craftsmanship is superb 10/10 and highly recommended."  
- **Tony Hayes, Hayes Traditional Butchers**

"Throughout the project we were kept informed of progress, hitches, problems (and solutions) and we always felt that we were priority, Aaron went to great lengths to make sure we got the result we wanted, even changing things to suit us when we "changed our minds."  
- **Adele Collis, Bridge McFarland**

"Throughout the works from design to completion the attention to detail and ethics employed by HK Interiors was amazing. Unlike other firms they always looked for a solution that was most beneficial and cost effective to me and my business and not themselves."  
- **Malcom Leary, Malcom Michaels Butchers**

# THE PROCESS

PROJECT DELIVERY PROCESS



# CASE STUDIES

THE HUB ON VERULAM /WORK SPACE







THE HUB ON VERULAM / OUTSIDE AREA

# THE HUB on VERULAM

MEMBERS CLUB, KITCHEN AND BAR

## SIZE

700 Sqm

## LOCATION

St. Albans, Hertfordshire

## COMPLETION

June 2022

## PROJECT DETAILS

Design

Project Management

Site Fit Out

Bespoke Furniture

## DESCRIPTION

Following the successful design and fit out works on the clients Deli, HK Interiors were appointed by the client again to design and fit out the vision for their newly acquired premises - The Hub, a members club with several bars, work spaces and a restaurant.

Our design team worked closely with the client on every element of the design which was meticulously developed with 3D visuals & samples provided for every finish for client approval. Fit out works included installation of a mezzanine as well as the refit of the bars, toilets, kitchens, seating areas and external spaces. By layering rich colours with intricate patterns and raw textures, we created an eclectic yet luxurious space for guests to meet with friends, enjoy a drink or attend an event.



THE HUB ON VERULAM / RESTAURANT



*"From the outset and during months of planning, their design and project management teams were wonderful to work with, helping to bring all of our visions to life and always forthcoming with ideas, information and creative flair"*

- Hannah Petrouis / The Hub on Verulam







LISHMAN'S/AMBIENT SHELVING

# LISHMAN'S of ILKLEY

## BUTCHERS & CHARCUTIERS

### SIZE

90 Sqm

### LOCATION

Ilkley, West Yorkshire

### COMPLETION

March 2022

### PROJECT DETAILS

Design  
Project Management  
Site Fit Out  
Bespoke Furniture  
Bespoke Refrigeration  
Planning Application

### DESCRIPTION

Lishman's of Ilkley, a multi-award winning Yorkshire butcher was refurbished by HK in March 2022. Working closely with our refrigeration manufacturer and our clients external designer, we helped develop a scheme which included wall cladding, tiling details and terrazzo effect solid surface. Our joinery factory produced units to house multidecks, dry ages, counters and a charcuterie hanging display. We also manufactured and installed the incredible shop front that features pilasters, removable blackboards and a sliding window hatch. Every aspect of the design was completely bespoke to deliver our clients exclusive vision.



LISHMAN'S/SHOP FRONT



LISHMAN'S/ DELI COUNTER









# THE DELI on VERULAM

## DELICATESSEN

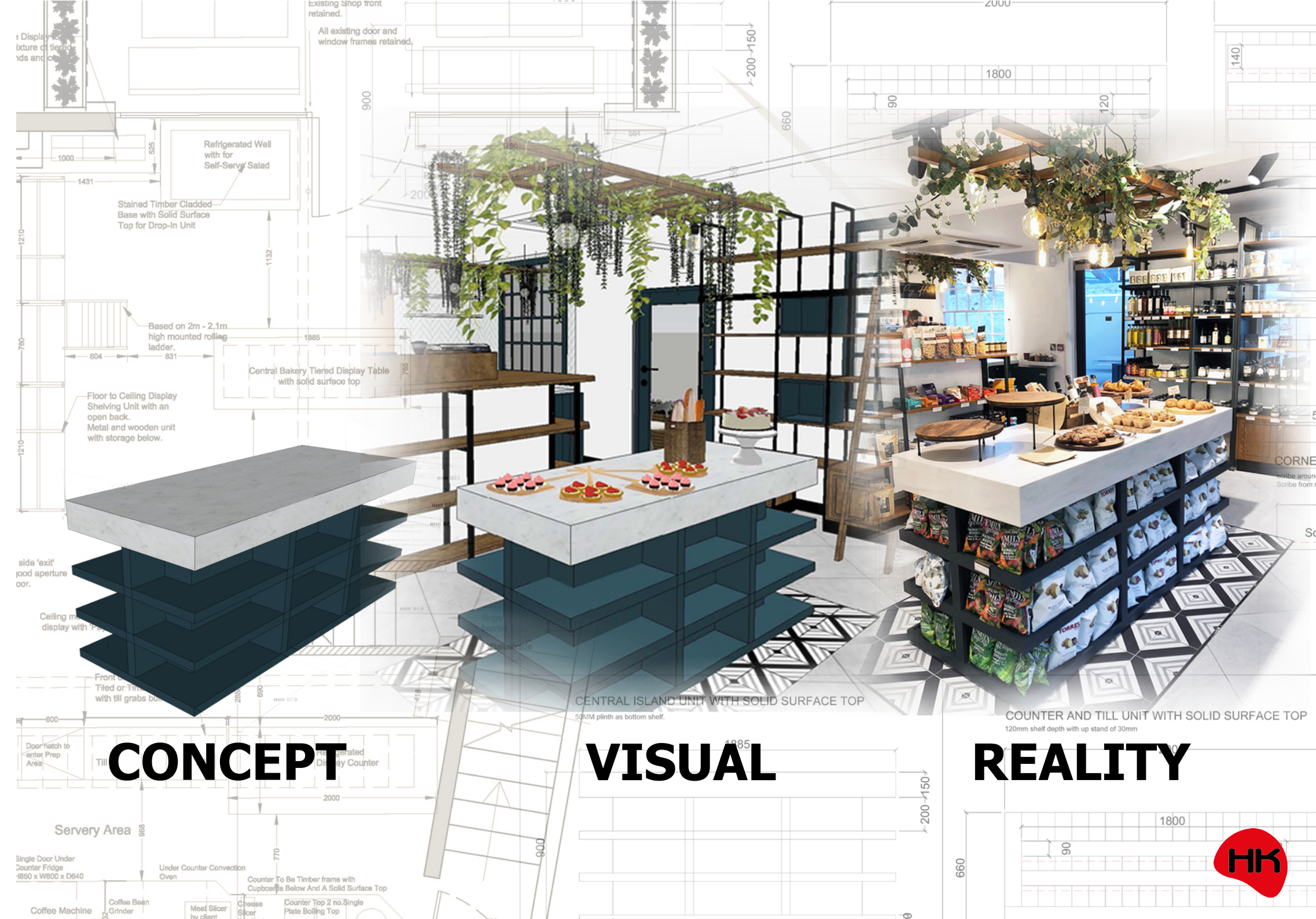
**SIZE**  
100 Sqm

**LOCATION**  
St. Albans, Hertfordshire

**COMPLETION**  
December 2021

**PROJECT DETAILS**  
Design  
Project Management  
Site Fit Out  
Bespoke Furniture  
Bespoke Refrigeration

**DESCRIPTION**  
HK Interiors were appointed to undertake the full design and fit-out of a new high-end business in St Albans. By offering a few initial concept design schemes our client chose one that suited their aspirations and through careful and close development the design incorporated a light & airy space with a tasteful, dynamic feature throughout. The works included new floor and wall finishes, lighting and all necessary Mechanical & Electrical works with the design and manufacture of bespoke joinery items.







**"Professionalism at its best !**  
**HK interiors is definitely the best group we have**  
**ever worked with. They've designed and built our**  
**shop in London and the result was amazing.**  
**We wouldn't have left a review generally, but**  
**they do deserve this one no doubt's. A very**  
**big thank you to all of you guys, you've done a**  
**great job and resolved all the issues with the**  
**professionalism of a top notch company."**  
**- Alessandro Grappelli / Pizzcheria Grappelli**

# PIZZICHERIA GRAPPELLI

## ITALIAN DELI

**SIZE**  
 140 Sqm

**LOCATION**  
 Battersea, London

**COMPLETION**  
 April 2021

**PROJECT DETAILS**  
 Design  
 Project Management  
 Site Fit Out  
 Bespoke Furniture  
 Refrigeration  
 Planning

**DESCRIPTION**  
 Pizzicheria Grappelli located in London was refurbished by HK in early 2021. The owner of the delicatessen wanted a new look that was authentically Italian, incorporating a dry age window display, a lengthy deli counter and a bespoke wall mural. We delivered a design package that encapsulated a traditional Italian feel, showcasing a variety of continental products. The HK site team installed all joinery units and the shop front along with carrying out electric, plumbing and decorating works.



PIZZICHERIA GRAPPELLI / SHOP FRONT



PIZZICHERIA GRAPPELLI / INTERNAL







PIONEER / CAFE

# PIONEER FOOD STORE

## FOOD HALL

**SIZE**  
810 Sqm

**LOCATION**  
Carlisle, Cumbria

**COMPLETION**  
March 2019

**PROJECT DETAILS**  
Design  
Project Management  
Site Fit Out  
Bespoke Furniture  
Bespoke Refrigeration

**DESCRIPTION**  
HK Interiors were appointed to complete the design and fit-out of the retail area at Pioneer Food service's new flag-ship store in Carlisle. This involved the design, manufacture and installation of the entire shop floor along with the coffee lounge and kitchen. Over months of planning every element, the design was meticulously developed with 3D visuals, video walkthroughs, samples provided for every finish as well as prototype units being produced for approval, all whilst working with their project architect and construction contractor to ensure that the project would run smoothly during installation.



*" We selected HK Interiors from our shortlist because they came up with the best initial proposals and we were impressed with their can-do attitude and professionalism. Their design ideas were excellent and they collaborated extremely well with our team and other contractors during the process. Material samples and digital walkthroughs were readily supplied throughout. During the fit-out, the attitude of HK's team and contractors was second-to-none and the quality of workmanship and attention to detail was at a very high standard."*  
- Graham Jenkins / Pioneer Foods







DELICATESSEN

PLEASE COME AGAIN

1878  
COFFEE LOUNGE

1878  
COFFEE LOUNGE

1878  
COFFEE LOUNGE

1878  
COFFEE LOUNGE

SERVICES





FULLERS / BUTCHERY COUNTER AND DRY AGE

# FULLERS FARM SHOP

## FARM SHOP

### SIZE

95 Sqm

### LOCATION

Tunbridge Wells, Kent

### COMPLETION

December 2021

### PROJECT DETAILS

Design  
Project Management  
Site Fit Out  
Bespoke Furniture  
Bespoke Refrigeration

### DESCRIPTION

The clients at Fullers Farm Shop, were keen to showcase the butchery section of their farm shop, we did this by placing the 5.5 meter fresh meat counter directly in front of the entrance doors, with intricate timber cladding to the front of the counter. To add interest to the butchery prep area, we included a large butchers block and a dry ager with a himalayan salt wall in the build up of the back wall. The client was also keen to introduce a few industrial elements to the design. We accomplished this by adding brick effect tiles to the back wall, concrete slab floor tiles and installing false beams to the ceiling.



FULLERS / AMBIENT GONDOLA



FULLERS / VIEW OF SHOP







# THE MOTORIST

## AUTOMOTIVE VENUE

**SIZE**  
295 Sqm

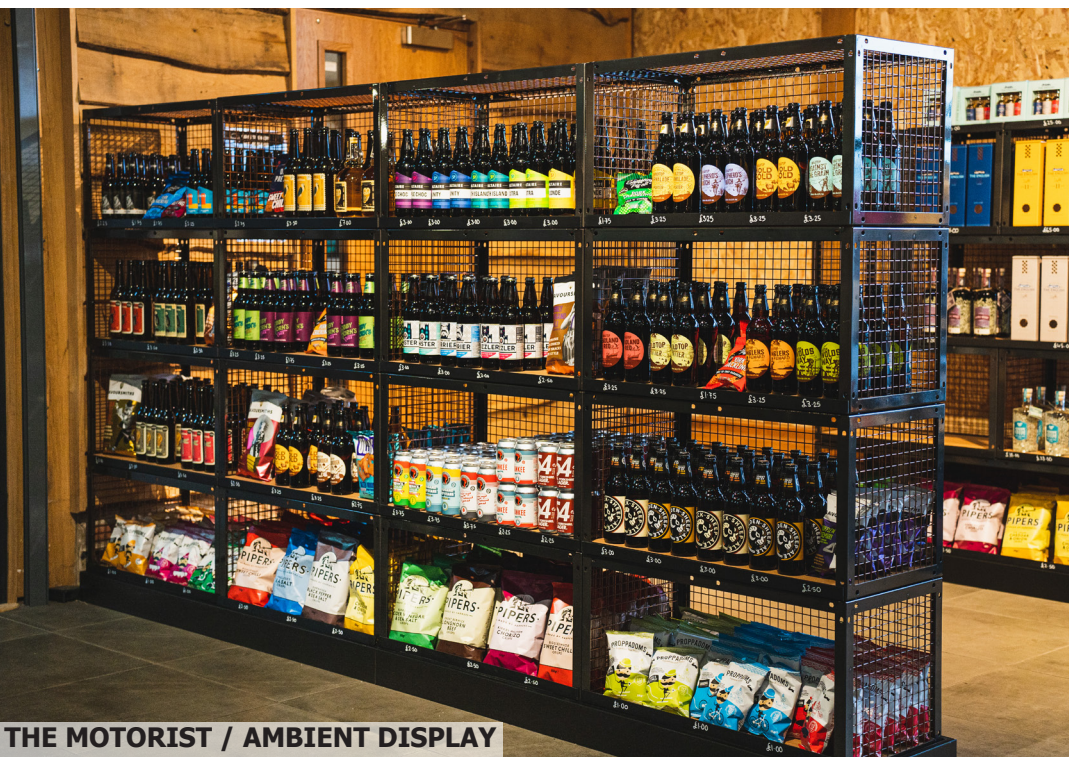
**LOCATION**  
Leeds

**COMPLETION**  
February 2023

**PROJECT DETAILS**  
Design  
Project Management  
Site Fit Out  
Bespoke Furniture

### DESCRIPTION

The Motorist got in contact with HK to help re-design their gift shop. We developed a plan with the client to accommodate their stock and designed displays to make the products as appealing to customers as possible. We designed and manufactured clothing rails with drawers below to hold excess stock, mesh crate displays for ambient food displays and a till unit with a lowered section for baskets. It was important to the client to keep vehicles the main focus of the scheme, with this in mind we designed and manufactured a confectionary display inside an old milk cart, including a pick 'n' mix feature to the rear and mini fridge and freezer to display drinks and ice cream. We installed track lighting throughout the shop, that were tailored to showcase the products on offer.







# CRANSTONS

## FOOD HALL

**SIZE**  
610 Sqm

**LOCATION**  
Penrith, Cumbria

**COMPLETION**  
October 2023

**PROJECT DETAILS**  
Design  
Project Management  
Site Fit Out  
Bespoke Furniture  
Bespoke Refrigeration

**DESCRIPTION**  
Cranstons Food Hall, Penrith was fit out in five phases over a two month period, allowing the clients to remain open and continue trading, this was imperative to our client. After months of meticulous planning, numerous design revisions and a lot of time spent in the joinery factory, Cranstons re-opened a lighter, brighter modern flagship food hall. The majority of this project included new joinery from the wall units around the perimeter to the central island displays, each item has been meticulously designed and crafted, working closely with the clients business development director so that everything manufactured was the perfect fit for their products.



CRANSTONS/ DELI COUNTER



CRANSTONS/ TILL AREA



*"The HK team did a superb job project managing the major refurbishment of our flagship Cumbrian Food Hall. Their professional team guided us through the whole process from designs and costing to completion."*  
- Philip Cranston / Cranstons







Construct new ramp to external side area to raise floor level to meet 'exit' door and for external seating.

Feature Display a mixture of tiered stands and open

Existing Shop front retained.  
All existing door and window frames retained.

Refrigerated Well with for Self-Serve Salad

Stained Timber Cladded Base with Solid Surface Top for Drop-In Unit

Hessian Basket Stand

Open Mid Height Timber/Metal Display Unit with Timber Base

Ramp

Existing glass brick floor to be Covered

Based on 2m - 2.1m high mounted rolling ladder.

Floor to Ceiling Display Shelving Unit with an open back. Metal and wooden unit with storage below.

Central Bakery Tiered Display Table with solid surface top

Open Fronted Multideck

Above Glass Door Wine Cooler by client H820 x W595 x D570  
Below Glass Door Display Freezer by client H850 x W600 x D600  
Additional Shelving

w: [www.hk-interiors.co.uk](http://www.hk-interiors.co.uk)

e: [sales@hk-interiors.co.uk](mailto:sales@hk-interiors.co.uk)

t: 0114 317 7929

Remove existing side 'exit' door and make good aperture to receive new door.

Removal of existing stairs balustrade and installation of new mid-height stud wall to existing stairs opening to 1200mm high.

Ceiling mounted hanging planter display with 'Pay Here' Sign and pendant lights

Front of Counter to be Tiled or Timber Clad with till grabs built within

Door hatch to enter Prep Area

Refrigerated Display Counter

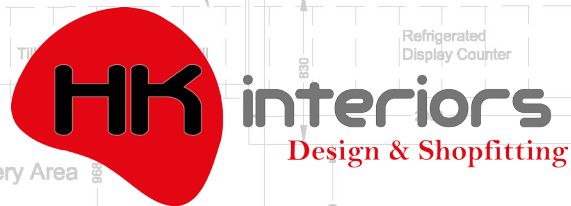
Servery Area

Single Door Under Counter Fridge H850 x W600 x D640

Under Counter Convection Oven

Counter To Be Timber frame with Cupboards Below And A Solid Surface Top

Counter Top 2 no. Single



Full height shelving around this area of the counter.